



PNEUMATIC COMPONENTS AND SYSTEMS

F920 Inline Filter

The F920 Inline Filter eliminates contamination in a pneumatic system. The overall size of the filter has been minimized to fit into the smallest design envelope. The filters are precision molded of polysulfone material. The filter media is Dutch weave 316 stainless Steel screen which is resistant to corrosion. The product has straight barbs fitting for 1/16" I.D Tubing.

Common applications include:

- Disposable Devices
- Miniature Devices
- Medical Devices
- Compact Filter

PRODUCT SPECIFICATIONS

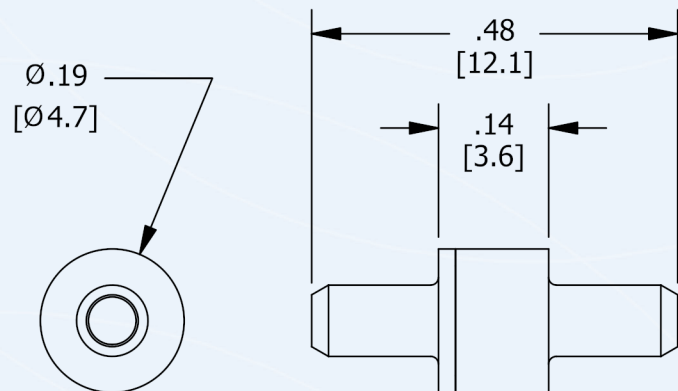
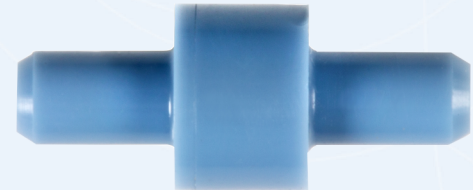
Barb Sizes: 1/16" I.D Tubing

Housing: Polysulfone

Filter Media: 316 Stainless Steel Filter Screen

Tube Retention Pressure Range: 10-30 PSI*

*Depending on tubing characteristics



Dimensions in Inches [Millimeters]
*Not to scale

Model Number	Filter Size (Microns)	Filter Material	Color Code	Port Connections
F920	5	Polysulfone	Light Blue	Straight Barbs 1/16"

The filter table shows stock color and filter sizes. Custom filter sizes and types are available upon request.

