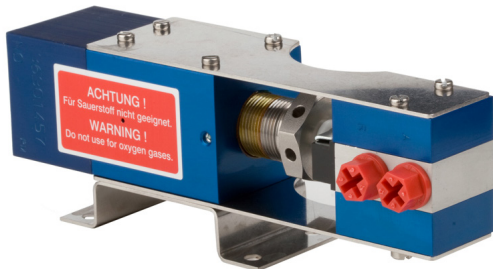


## AIR PILOT SWITCHES

PRESSURES FROM 145 TO 14,500 PSI



- Air pilot pressure switches are pressure sensing devices with an air valve, used to turn air driven gas boosters, liquid pumps and air amplifiers on/off at a desired set pressure by controlling a pneumatic signal to the unit's air pilot control feature.
- Units can operate at their maximum drive air pressure, achieving desired outlet set pressure as rapidly as possible.
- Switch resets in approximately 10% drop in set pressure, for the controlled unit restart.
- Externally adjustable under pressure
- Normally Open switches close upon reaching set pressure (typically used to stop on pressure increase when the desired high pressure is achieved).
- Normally Closed switches open upon reaching set pressure (typically used to stop unit on pressure decrease, such as low bottle supply pressure).

### Air Pilot model generator

APS-.....-.....-.....

#### Switch Position

NO - Normally Open  
NC - Normally Closed

#### Special versions

O2 - Cleaned for oxygen service, 316 stainless steel body  
SS - 316 stainless steel body

#### Connections (Air ports are 1/8" BSPP)

4B - 1/4" BSPP with outer seal  
4P - 1/4" FNPT  
4M - 1/4" Medium pressure coned and threaded

#### Pressure Ranges

10-30 - between 10 and 30 bar (145-435 psi)  
30-100 - between 30 and 100 bar (435 - 1450 psi)  
100-300 - between 100 and 300 bar (1450 - 4350 psi)  
150-400 - between 150 and 400 bar (2175-5800 psi)  
300-1000 - between 300 and 1000 bar (4350-14,500 psi)

### Typically stocked switches

APS-10-30-4P-NO  
APS-10-30-4P-NC  
APS-30-100-4P-NO  
APS-30-100-4P-NC  
APS-150-400-4P-NO  
APS-150-400-4P-NC  
APS-100-300-4P-NO  
APS-100-300-4P-NC  
APS-300-1000-4P-NO  
APS-300-1000-4P-NC  
APS-10-30-4B-O2-NC  
APS-100-300-4B-O2-NO

### TECHNICAL INFORMATION

#### Materials

- Body (Standard).....Aluminum Alloy
- Body (Optional).....316 Stainless Steel
- Piston.....440-B
- Seal.....PTFE with T46 Turcon
- Gland.....303 SS
- O-Ring.....Buna-N

#### Connections

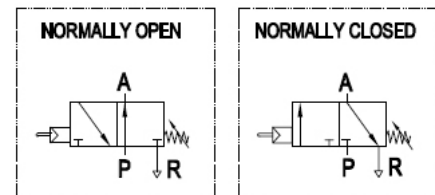
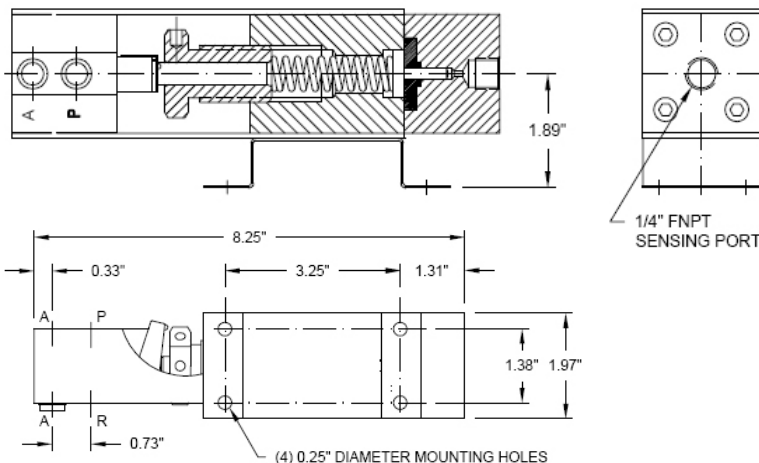
- Sensing Port.....1/4" FNPT
- Air Ports.....1/8" BSPP

### Adjustment

Turn adjusting gland (32 mm hex) clockwise to increase, or counter clockwise to decrease the pressure setting. The gland hex also has holes for using a rod or Allen wrench. The dead-band is about 10% of the final set pressure.

### DIMENSIONS (inches)

NOTE: Maximum inlet air pressure is 145 PSI  
Weight is 3 lbs.



"A" = AIR OUTLET TO PILOT CONNECTION "X" OF PUMP OR BOOSTER (145 PSI MAXIMUM), 1/8" BSPP

"P" = AIR INLET FOR PILOT, 145 PSI MAXIMUM, 1/8" BSPP

"R" = RELEASE VENT OUTLET, 1/8" BSPP

SENSING PORT = 1/4" FNPT

NOTE: Dimensions are subject to change.  
Consult Factory.

# HIGH PRESSURE RELIEF VALVES

**MT10RV** - PRESSURES FROM 1,000 TO 10,000 PSI  
**MT25RV** - PRESSURES FROM 2,500 TO 25,000 PSI

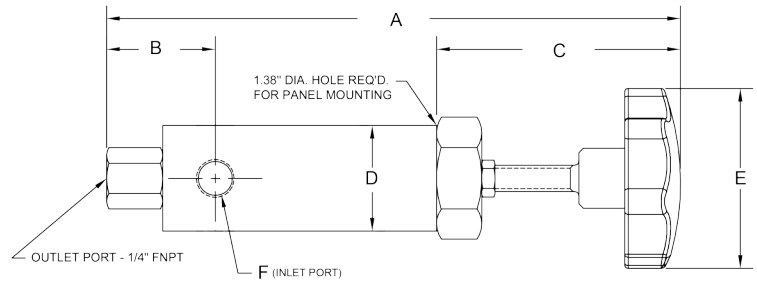
## MT10RV



## MT25RV



### DIMENSIONS (inches)



Dimension	MT10RV	MT25RV
A	8.13"	9.94"
B	1.56"	2.13"
C	3.50"	1.68"
D	1.50"	2.00"
E	2.50"	5/16" Allen Wrench
F	1/4" FNPT (2)	1/4" H.P.

Catalog Number	Connection Size		Orifice (in.)	Service	Pressure Rating (psi) @ R.T.		Valve Panel Hole	Body Diameter
	Inlet	Outlet			Minimum Setting	Maximum Setting		
MT10RV	1/4" FNPT	1/4 FNPT	0.070	Liquid/Gas	1,000	10,000	1.38	1.50
MT25RV	1/4" H.P.	1/4 FNPT	0.070	Liquid/Gas*	2,500	25,000	1.625	2.00

All dimensions are for reference only and are subject to change.

When selecting multiple items, the pressure rating would be that of the lowest rated components.

\* Not bubble tight on gas service.

All general terms and conditions of sale, including limitations of our liability, apply to all products and services sold.

## GAS RECEIVERS

Alloy Steel with nickel plating

1/4" high pressure inlet/outlet connections on each end.

Optional 1/4" NPT connections available.

- **REC-36S**....36 Cu. In. - 10,000 psi, 2.5" Dia. x 20.63" L overall
- **REC-66S**....66 Cu. In. - 10,000 psi, 2.5" Dia. x 33" L overall



## DRY AIR SPOOLS

For severe duty service

- The Dry Air Spool (DAS) option should be considered for extreme operating conditions involving air or gas drive mediums below 0°F. dewpoint, or very cold climate applications (-40°C.).
- This option eliminates lubrication maintenance of the spool valve.



## AIR RECEIVER TANKS

Carbon Steel, ASME Certified

- **T1-400**.....1 Gallon - 400 psi, no mounting, 6" OD x 16" L, 10 lbs., connections: (2) 3/4" FNPT (1) 1/4" FNPT
- **T4-600**.....4 Gallon - 600 psi, with mounting base, 10.75" Dia. x 13.75" H x 15" L, 46 lbs., connections: (2) 3/4" FNPT (3) 3/8" FNPT (2) 1/4" FNPT
- **T-302461**...10 Gallon - 200 psi, with mounting legs, 10" OD x 30" L x 11.5" H, 43 lbs., connections: (2) 3/4"
- **T-302464**...15 Gallon - 200 psi, with mounting legs, 12" OD x 33" L, 14.5" H, 51 lbs., connections: (2) 3/4" FNPT (3) 1/2" FNPT (1) 1/4" FNPT
- **T-302470**...30 Gallon - 200 psi, with mounting legs, 16" OD x 38" L, 20.6" H, 111 lbs., connections: (2) 1 1/2" FNPT (3) 3/4" FNPT (1) 1/2" FNPT



1 Gallon



4 Gallon



10, 15 & 30 Gallon

## AIR CONTROL PACKAGES

Consisting of a filter, regulator with gauge, shut-off valve and required fittings

- **ACM**....For all LC, PPO, PP & PPSF pumps, and MPLV air amplifiers
- **AC**.....For all S Pumps
- **ACP**....For all L, LO & LSF pumps, DLA & GPLV air amplifiers and DLE gas boosters
- **ACG**....For all GX pumps



ACM  
AC  
ACP  
ACG

## PUMP CYCLE COUNTERS

To order: add suffix to pump P/N, eg. PPO12-CCW

- **CCP**....Panel mount, 0 - 999,999 max. cycles, 1" high x 2" wide hole
- **CCW**...Wall mount, 0 - 999,999 max cycles
  - Reset button



## CLEANING FOR OXYGEN SERVICE

Meets or exceeds standards of:

CGA G-4.1, ASTM G93, SAE ARP117

Call Maxpro Technologies to receive a quotation regarding cleaning for oxygen service.



# HIGH PRESSURE DATA LOGGER

Maxpro Technologies introduces an electronic pressure logger to simplify the recording of testing data.

The unit is designed to digitally record pressure during tests, complementing Maxpro pump and booster packaged power systems as well as other types of power systems.

- Pressure loggers are useful in any industry that has need for an easy, accurate way to record pressure tests.
- The complete Pressure Logger comes with a pressure transducer, 2 pre-formatted jump drives and instructions, including step by step instructions on how to create customized test reports.

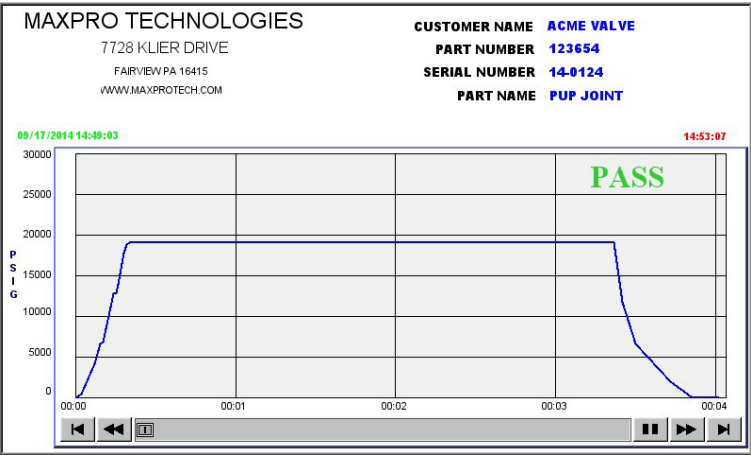
## Pressure Logger Features:

- 7" Color touch screen
- Instant Test Report
- USB Memory Port
- Ethernet Port
- 120 V 60 Hz or 230 V 50/60 Hz
- Digital Indication of Realtime Pressure and Peak Pressure
- Trending On screen
- Data Storage for import into Spreadsheets or Test Report
- Auto Peak Reset
- Pressure ranges available from 0-100 psi to 0-100,000 psi



### Options Available:

Keyboard with Touchpad  
Thermocouple and RTD Temperature Sensors  
Multiple Sensors for different Pressure Ranges



Dimensions	
	Maxpro Pressure Logger:
Height	12"
Width	10"
Depth	8"
Weight	12 lb.